



UniString

BWS302 9LED RGBNW 24V S DMX N10P20

53 lm - 2 W - - K

UniString is a surface-mounted, exterior-rated and compact-sized architectural LED direct view string that is designed for architectural and media façade outdoor lighting applications. The robust mechanical design, easy installation and unique optical lenses make UniString ideal for buildings/media facades, bridges, arenas, theatres, amusement parks and recreational centres. Available in white, monochromatic colours, RGB, RGBW and tunable white. Available in symmetrical and asymmetrical optical distributions with DMX control option to give architects and designers the freedom to explore a wide range of concepts and design with no limitations.

Warnings and Safety

- For outdoor use only

Product data

| General Information | |
|-----------------------------|---|
| Lamp colour code | Red, green, blue and white |
| Light source replaceable | No |
| Driver included | No |
| Optical cover/lens type | PCC [Polycarbonate bowl/cover clear] |
| Luminaire light beam spread | 110° x 110° |
| Control interface | Dynamix DMX |
| Connection | Push-in connector 5-pole (PI) |
| Cable | 2-metre cable with 10 nodes, 200 mm pitch and 2 connectors 5-pole |
| Protection class IEC | Safety class III (III) |
| Glow-wire test | Temperature 750 °C, duration 30 s |
| Flammability mark | F [For mounting on normally flammable surfaces] |

| CE mark | CE mark |
|-----------------------------|---------------|
| Operating and Electrical | |
| Input Voltage | 24 DC V |
| Input frequency | - Hz |
| Power factor (min.) | 0.9 |
| Controls and Dimming | |
| Dimmable | Yes |
| Mechanical and Housing | |
| Housing material | Polycarbonate |
| Optical cover/lens material | Polycarbonate |

UniString

| | |
|----------------|---------|
| Overall length | 48 mm |
| Overall width | 15.5 mm |
| Overall height | 60.1 mm |
| Colour | Black |

Approval and Application

| | |
|------------------------------|---|
| Ingress protection code | IP66 [Dust penetration-protected, jet-proof] |
| Mech. impact protection code | IK06 [1 J] |

Initial Performance (IEC Compliant)

| | |
|-------------------------------------|---------|
| Initial luminous flux (system flux) | 53 lm |
| Luminous flux tolerance | +/-10% |
| Initial LED luminaire efficacy | 27 lm/W |
| Lamp colour temperature | - K |
| Colour Rendering Index | - |
| Initial input power | 2 W |
| Power consumption tolerance | +/-10% |

Application Conditions

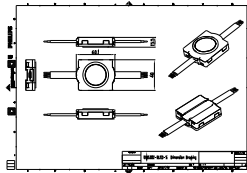
| | |
|---------------------------|----------------|
| Ambient temperature range | -40 to +50 °C |
| Maximum dimming level | 5% (1 to 10 V) |

Product Data

| | |
|-----------------------------------|------------------------------------|
| Full product code | 911401753982 |
| Order product name | BWS302 9LED RGBNW 24V S DMX N10P20 |
| Order code | 911401753982 |
| SAP numerator – quantity per pack | 1 |
| Numerator – packs per outer box | 120 |
| SAP material | 911401753982 |
| SAP net weight (piece) | 0.070 kg |



Dimensional drawing



BWS220 SmartBright LED

