



ZXP399 DMX Controls and Accessories

ZXP399 DMX/RDM amplifier 24V 4P

12 to 24 DC V Hz - Dust penetration-protected, jet-proof - CE mark - Black -

The ZXP399 DMX Controls and Wiring Accessories are to be used with our architectural and facade lighting luminaires (UniFlood C, M and G, UniStrip G4, UniEdge, UniDot G2, UniString and UniBar).;DMX Controls include a main controller, stand-alone controller, sub-controllers, DMX amplifier and DMX addressing device.;Main Controller: Industrial computer that can control up to 6,000 DMX universes.;Stand-alone Controller: Fits all medium applications with up to 700 DMX universes.;Wiring accessories include leader and jump cables with male and female IP67 connectors and end-caps.;Addressing Device: Hand-held device that can write DMX addresses to a whole run on-site within minutes.;DMX Amplifier: Compact, IP65 and low-power repeater that can amplify the DMX signal for up 100 metres.

Product data

General Information	
CE mark	CE mark
Colour	Black
Operating and Electrical	
Input Voltage	12 to 24 DC V
Input frequency	- Hz

Mechanical and Housing	
Overall length	136.4 mm
Overall width	40 mm
Overall height	25.2 mm
Dimensions (height x width x depth)	25 x 40 x 136 mm (1 x 1.6 x 5.4 in)

ZXP399 DMX Controls and Accessories

Approval and Application

Ingress protection code IP65 [Dust penetration-protected, jet-proof]

Product Data

Full product code 871951494694199
Order product name ZXP399 DMX/RDM amplifier 24V 4P
EAN/UPC – product 8719514946941
Order code 911401756702

SAP numerator – quantity per pack 1

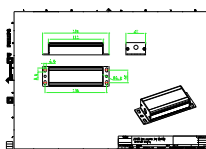
Numerator – packs per outer box 12

SAP material 911401756702

SAP net weight (piece) 0.157 kg

IP65

Dimensional drawing



ZXP399 DMX/RDM amplifier 24V 4P

