



CorePro LED tube EM/ Mains T8

CorePro LEDtube HO 1200mm 18W865T8 ID

CorePro, LEDtube, T8, EM/Mains, Single-end, 1200 mm, 220-240 V, 18 W, 36W TL-D, 6500 K, 2100 lm, 50000 hour(s)

The CorePro LEDtube is an affordable LED solution suitable for replacing T8 fluorescent lamps. The product provides a natural lighting effect for use in general lighting applications, as well as instant energy savings – an environmentally friendly solution.

Warnings and Safety

- NOTE: The overall energy efficiency and light distribution of any installation that uses these lamps will be determined by the design of the installation.
- Installation must be done according to the installation diagrams provided with the lamp or available online. Installation must be done by a certified professional.

Product data

General Information		Correlated Color Temperature (Nom)		6500 K
Cap-Base	G13	Luminous Efficacy (rated) (Nom)		116 lm/W
Nominal lifetime	50,000 hour(s)	Color Consistency		<6
Switching Cycle	200,000	Color rendering index (CRI)		80
Lighting Technology	LEDtube	LLMF At End Of Nominal Lifetime (Nom)		70 %
		Photobiological safety according to EN 62471 RGO		
Light Technical		Operating and Electrical		
Color Code	865 [CCT of 6500K]	Input Frequency	50 to 60 Hz	
Beam Angle (Nom)	240 degree(s)	Power Consumption	18 W	
Luminous Flux	2,100 lm	Lamp Current (Nom)	100 mA	
Color Designation	Cool Daylight			

CorePro LED tube EM/Mains T8

Wattage Equivalent	36 W
Starting Time (Nom)	0.5 s
Warm-up time to 60% light	0.5 s
Power Factor (Fraction)	0.9
Voltage (Nom)	220-240 V
LED alternative to fluorescent lamp power	36W TL-D
Ballast Compatibility	EM/Mains

Temperature

T-Case Maximum (Nom)	55 °C
----------------------	-------

Controls and Dimming

Dimmable	No
----------	----

Mechanical and Housing

Bulb Finish	Frosted
Bulb Material	Glass
Product Length	1,200 mm
Bulb Shape	T8
Net Weight (Piece)	0.200 kg

Approval and Application

Energy Saving Product	Yes
-----------------------	-----

Approval Marks	RoHS compliance KEMA Keur certificate
EU RoHS compliant	Yes
Ambient temperature range	-20 to +45 °C

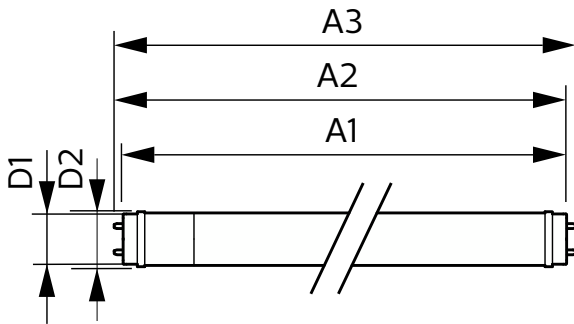
Application Conditions

Wireless Technology	Not applicable
---------------------	----------------

Product Data

Order product name	CorePro LEDtube HO 1200mm 18W865T8 ID
Full product name	CorePro LEDtube HO 1200mm 18W865T8 ID
Full product code	872016929413400
Order code	929003771708
Material Nr. (12NC)	929003771708
Numerator - Quantity Per Pack	1
EAN/UPC - Product/Case	8720169294134
Numerator - Packs per outer box	20
EAN/UPC - Case	8720169294141

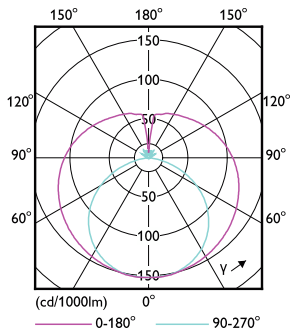
Dimensional drawing



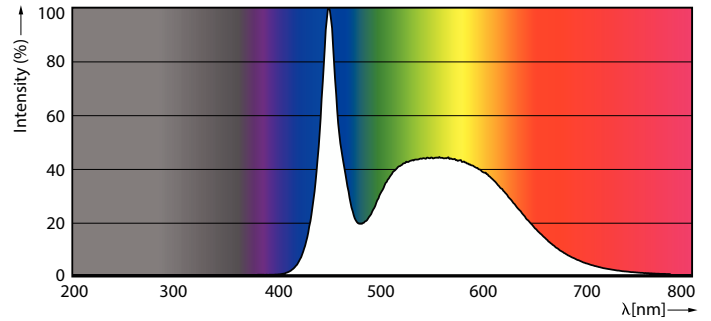
Product	D1	D2	A1	A2	A3
CorePro LEDtube HO 1200mm 18W865T8 ID	25.7 mm	28 mm	1,198 mm	1,205 mm	1,212 mm

CorePro LED tube EM/Mains T8

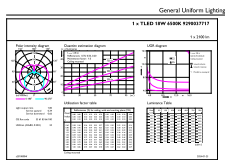
Photometric data



Light Distribution Diagram - CorePro LEDtube HO 1200mm 18W865T8 ID



Spectral Power Distribution Colour - CorePro LEDtube HO 1200mm 18W865T8 ID

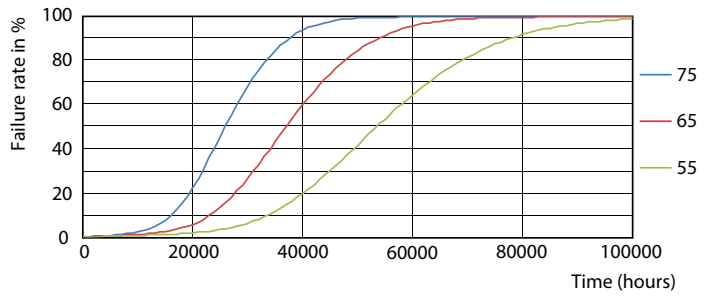


General uniform lighting - CorePro LEDtube HO 1200mm 18W865T8 ID

Lifetime



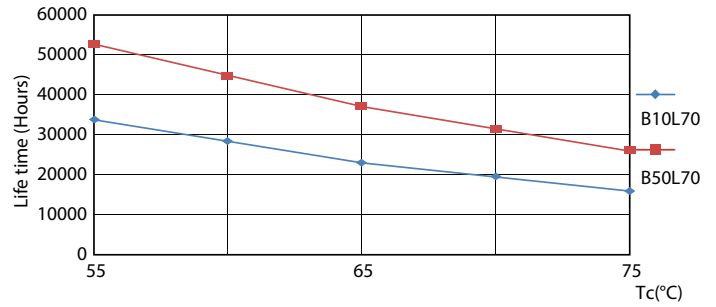
Life Expectancy Diagram



FailureRate

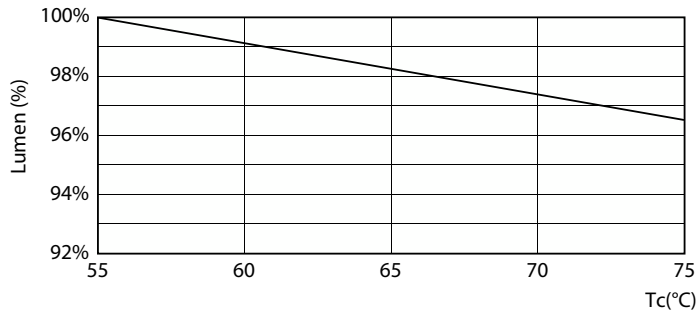
CorePro LED tube EM/Mains T8

Lifetime



Lumen Maintenance Diagram - CorePro LEDtube HO 1200mm 18W865T8 ID

LifetimeVsTc



Lumen Maintenance Diagram - CorePro LEDtube HO 1200mm 18W865T8 ID

