



UniFlood C

BVP321 12LED 27K 220V 45 D2

1920 lm - 27 W - - K

UniFlood C is a circular-shaped, exterior-rated and cost-effective architectural LED floodlight that is designed for façade, landscape and outdoor flood lighting applications. The robust mechanical design and high-efficiency optical design make it ideal for illuminating multi-storey exterior facades, bridges, landmarks and monuments. Available in white, monochromatic colours, RGB, RGBW and tunable white. Six different spread lenses, ranging from narrow spot to wide flood, and a DMX512/RDM control option available to give architects and designers the freedom to explore a wide range of concepts and design with no limitations.

Warnings and Safety

- For outdoor use only

Product data

General Information	
Lamp colour code	Warm white
Driver included	Yes
Optical cover/lens type	GT [Tempered glass]
Control interface	-
Connection	Flying leads/wires
Cable	Cable 0.5 m without plug 3-pole
Protection class IEC	Safety class I (I)
Flammability mark	F [For mounting on normally flammable surfaces]
CE mark	CE mark
Operating and Electrical	
Input Voltage	220 to 240 V
Input frequency	50 to 60 Hz

Inrush current	60 A
Power factor (min.)	0.9
Controls and Dimming	
Dimmable	No
Mechanical and Housing	
Housing material	Aluminum die-cast
Optical cover/lens material	Polymethyl methacrylate
Effective projected area	0.03 m ²
Colour	Dark Grey
Approval and Application	
Ingress protection code	IP66 [Dust penetration-protected, jet-proof]

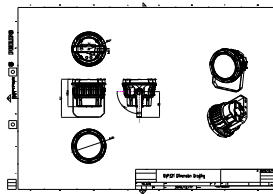
UniFlood C

Mech. impact protection code	IK08 [5 J vandal-protected]
Initial Performance (IEC Compliant)	
Initial luminous flux (system flux)	1920 lm
Luminous flux tolerance	+/-10%
Initial LED luminaire efficacy	71 lm/W
Lamp colour temperature	- K
Colour Rendering Index	80
Initial chromaticity	4 SDCM
Initial input power	27 W
Power consumption tolerance	+/-10%
Application Conditions	
Ambient temperature range	-40 to +50 °C

Product Data	
Full product code	871951453842999
Order product name	BVP321 12LED 27K 220V 45 D2
EAN/UPC – product	8719514538429
Order code	911401730753
SAP numerator – quantity per pack	1
Numerator – packs per outer box	6
SAP material	911401730753
SAP net weight (piece)	2.366 kg



Dimensional drawing



BVP321 12LED 27K 220V 45 D2

