



UniFlood C

BVP321 12LED 27K 220V 60 DMX D2

1880 lm - 27 W - - K

UniFlood C is a circular-shaped, exterior-rated and cost-effective architectural LED floodlight that is designed for façade, landscape and outdoor flood lighting applications. The robust mechanical design and high-efficiency optical design make it ideal for illuminating multi-storey exterior facades, bridges, landmarks and monuments. Available in white, monochromatic colours, RGB, RGBW and tunable white. Six different spread lenses, ranging from narrow spot to wide flood, and a DMX512/RDM control option available to give architects and designers the freedom to explore a wide range of concepts and design with no limitations.

Warnings and Safety

- For outdoor use only

Product data

| General Information | |
|--------------------------|--|
| Lamp colour code | Warm white |
| Driver included | Yes |
| Optical cover/lens type | GT [Tempered glass] |
| Control interface | Dynamic DMX/RDM |
| Connection | Flying leads/wires and 2 push-in connectors 4-pole |
| Cable | Cable 0.5 m without plug 3-pole and 2 cables 0.5 m with connector 4-pole |
| Protection class IEC | Safety class I (I) |
| Flammability mark | F [For mounting on normally flammable surfaces] |
| CE mark | CE mark |
| Operating and Electrical | |
| Input Voltage | 220 to 240 V |

| Input frequency | 50 to 60 Hz |
|-----------------------------|-------------------------|
| Inrush current | 60 A |
| Power factor (min.) | 0.9 |
| Controls and Dimming | |
| Dimmable | Yes |
| Mechanical and Housing | |
| Housing material | Aluminum die-cast |
| Optical cover/lens material | Polymethyl methacrylate |
| Effective projected area | 0.03 m ² |
| Colour | Dark Grey |

UniFlood C

Approval and Application

| | |
|------------------------------|---|
| Ingress protection code | IP66 [Dust penetration-protected, jet-proof] |
| Mech. impact protection code | IK08 [5 J vandal-protected] |

Initial Performance (IEC Compliant)

| | |
|-------------------------------------|---------|
| Initial luminous flux (system flux) | 1880 lm |
| Luminous flux tolerance | +/-10% |
| Initial LED luminaire efficacy | 70 lm/W |
| Lamp colour temperature | - K |
| Colour Rendering Index | 80 |
| Initial chromaticity | 4 SDCM |
| Initial input power | 27 W |
| Power consumption tolerance | +/-10% |

Application Conditions

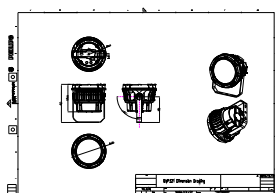
| | |
|---------------------------|---------------|
| Ambient temperature range | -40 to +50 °C |
|---------------------------|---------------|

Product Data

| | |
|-----------------------------------|---------------------------------|
| Full product code | 871951453852899 |
| Order product name | BVP321 12LED 27K 220V 60 DMX D2 |
| EAN/UPC – product | 8719514538528 |
| Order code | 911401730853 |
| SAP numerator – quantity per pack | 1 |
| Numerator – packs per outer box | 6 |
| SAP material | 911401730853 |
| SAP net weight (piece) | 2.366 kg |



Dimensional drawing



BVP321 12LED 27K 220V 60 DMX D2

