

MASTER LEDtube EM/ Mains

MASTER LEDtube 1500mm UO 21.7W 865 T8

The Philips MASTER LEDtube integrates a LED light source into a traditional fluorescent form factor. Its unique design creates a perfectly uniform visual appearance which cannot be distinguished from traditional fluorescent. This product is the ideal solution for up lighting in general lighting applications.

Warnings and Safety

• -

Product data

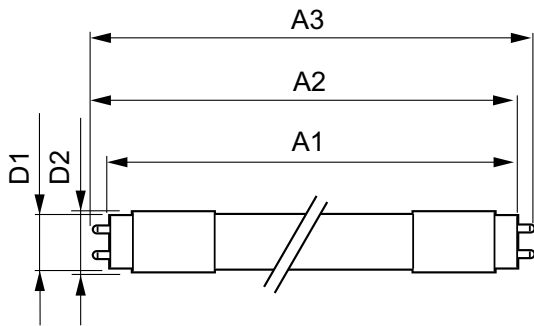
General information		LLMF at end of nominal lifetime (nom.) 70 %	
Cap base	G13 ROT (Rotating) [Medium Bi-Pin Fluorescent]	Operating and electrical	
EU RoHS compliant	Yes	Input frequency	50 to 60 Hz
Nominal lifetime (nom.)	75000 h	Power (Rated) (Nom)	21.7 W
Switching cycle	200000	Lamp current (max.)	108 mA
	Sphere	Lamp current (min.)	89 mA
Tier	MASTER	Starting time (nom.)	0.5 s
		Warm-up time to 60% light (nom.)	0.5 s
		Power factor (nom.)	0.9
		Voltage (Nom)	220-240 V
Light technical		Temperature	
Colour Code	865 [CCT of 6,500 K]	T-ambient (max.)	45 °C
Technical Beam Angle (Nom)	160 °	T-ambient (min.)	-20 °C
Lamp Luminous Flux 25°C EL (Nom)	3700 lm	T storage (max.)	65 °C
Colour Designation	Cool Daylight	T storage (min.)	-40 °C
Colour Temperature, horizontal (Nom)	6500 K		
Lamp Luminous Efficacy EM (Nom)	170 lm/W		
Colour consistency	<6		
Colour Rendering Index,horiz (Nom)	80		

MASTER LEDtube EM/Mains

T-Case maximum (nom.)	60 °C
Controls and dimming	
Dimmable	No
Mechanical and housing	
Lamp Finish	Frosted
Bulb material	Plastic
Product length	1500 mm
Bulb shape	Tube, double-ended
Approval and application	
Energy Efficiency Class	C
Energy-saving product	Yes
Approval marks	RoHS compliance CE marking KEMA Keur certificate

Approval marks	TUV
Energy consumption kWh/1,000 hours	22 kWh
	1206978
Product data	
Full product code	871951431666900
Order product name	MASTER LEDtube 1500mm UO 21.7W 865 T8
EAN/UPC – product	8719514316669
Order code	929002998702
SAP numerator – quantity per pack	1
Numerator – packs per outer box	10
SAP material	929002998702
Net Weight (Piece)	0.285 kg

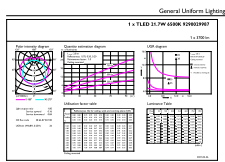
Dimensional drawing



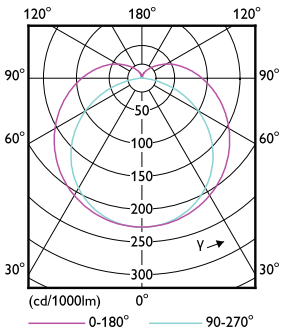
MASTER LEDtube 1500mm UO 21.7W 865 T8

Product	D1	D2	A1	A2	A3
MASTER LEDtube 1500mm UO 21.7W 865 T8	25.8 mm	28 mm	1498.8 mm	1505.9 mm	1513 mm

Photometric data



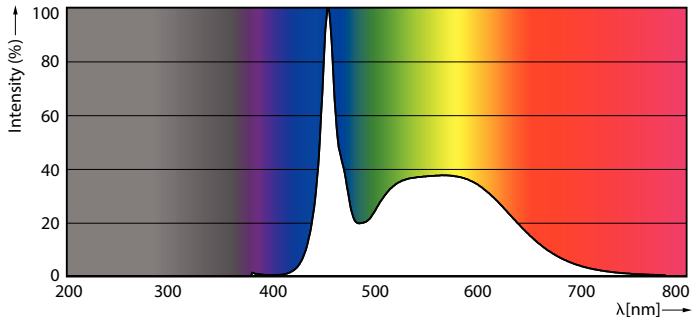
General uniform lighting



Light Distribution Diagram

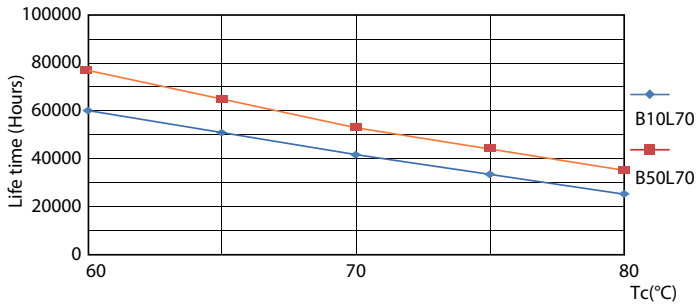
MASTER LEDtube EM/Mains

Photometric data

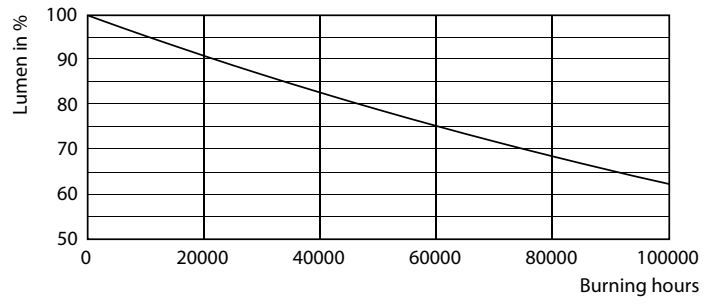


LEDtube MAS 21,7W G13 3700lm 865

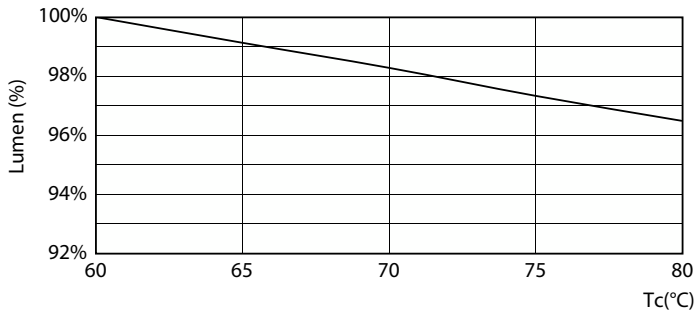
Lifetime



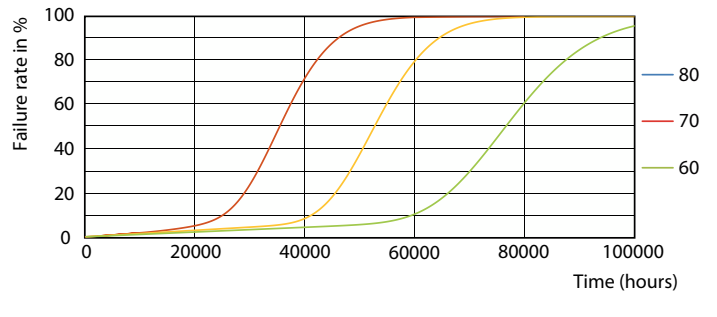
LifetimeVsTc



Lumen Maintenance Diagram



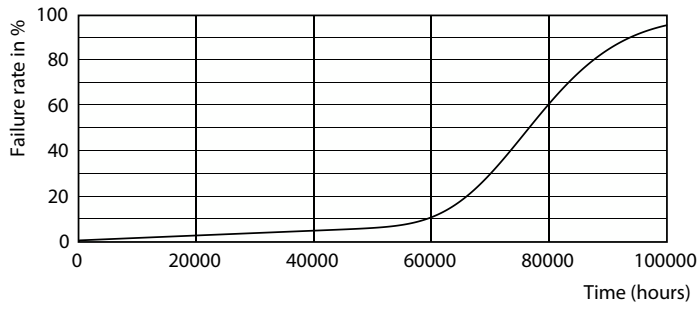
LumenVsTc



FailureRate

MASTER LEDtube EM/Mains

Lifetime



Life Expectancy Diagram

