

UniStrip G4

BCP383 6LED 27K 220V 40 L30 DMX

UniStrip G4 is a surface-mounted, exterior-rated LED luminaire that is designed for façade and outdoor architectural lighting applications.;One family that fits all your needs, wall washing, grazing and also linear flood lighting.;The robust mechanical and unique optical designs make it ideal for illuminating buildings facades, bridges, overpasses and any application that requires a linear lighting solution.;Available in white, monochromatic colours, RGB, RGBW and tunable white and DMX control option available with up to 8 pixels (8IDs) to give architects and designers the freedom to explore a wide range of concepts and design with no limitations.

Warnings and Safety

- For outdoor use only

Product data

| General Information | |
|-------------------------------|---|
| Lamp colour code | Warm white |
| Light source replaceable | No |
| Number of gear units | 1 unit |
| Driver/power unit/transformer | PSU [Power supply unit] |
| Driver included | Yes |
| Optical cover/lens type | GT [Tempered glass] |
| Luminaire light beam spread | 40° x 40° |
| Control interface | Dynamix DMX |
| Connection | Flying leads/wires and 2 push-in connectors 4-pole |
| Cable | Cable 0.3 m without plug 3-pole + 2 cables 0.3 m with connector 4-pole |
| Protection class IEC | Safety class I (I) |
| Flammability mark | F [For mounting on normally flammable surfaces] |

| | |
|---|--|
| CE mark | CE mark |
| Optic type outdoor | Medium beam angle 40° |
| Number of products on MCB (16 A type B) | 6 |
| Light source engine type | LED |
| Serviceability class | Class B, the luminaire is equipped with some serviceable parts (when applicable): driver, control units, surge-protection device, front cover and mechanical parts |

Light Technical

| | |
|--------------------------------|---|
| Standard tilt angle post-top | - |
| Standard tilt angle side entry | - |

Operating and Electrical

| | |
|-----------------|--------------|
| Input Voltage | 220 to 240 V |
| Input frequency | 50 to 60 Hz |

UniStrip G4

| | |
|---------------------|---------|
| Inrush current | 60 A |
| Inrush time | 0.45 ms |
| Power factor (min.) | 0.9 |

Controls and Dimming

| | |
|----------|-----|
| Dimmable | Yes |
|----------|-----|

Mechanical and Housing

| | |
|-----------------------------|------------------------------------|
| Housing material | Aluminum extruded |
| Optic material | Polymethyl methacrylate |
| Optical cover/lens material | Glass |
| Fixation material | Aluminium |
| Mounting device | MBA [Mounting bracket adjustable] |
| Optical cover/lens shape | Flat |
| Optical cover/lens finish | Clear |
| Overall length | 300 mm |
| Overall width | 45 mm |
| Overall height | 105 mm |
| Colour | Dark Grey |

Approval and Application

| | |
|------------------------------|---|
| Ingress protection code | IP66 [Dust penetration-protected, jet-proof] |
| Mech. impact protection code | IK06 [1 J] |

Initial Performance (IEC Compliant)

| | |
|-----------------------|--------|
| Initial luminous flux | 656 lm |
|-----------------------|--------|

| | |
|--------------------------------|---------|
| Luminous flux tolerance | +/-10% |
| Initial LED luminaire efficacy | 44 lm/W |
| Lamp colour temperature | 2700 K |
| Colour Rendering Index | 80 |
| Initial chromaticity | 4 SDCM |
| Initial input power | 15 W |
| Power consumption tolerance | +/-10% |

Application Conditions

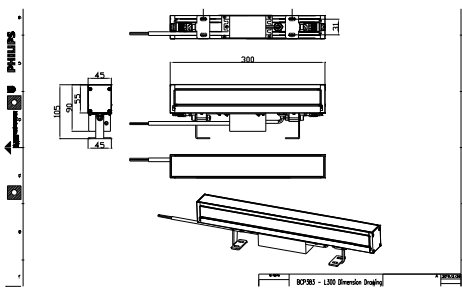
| | |
|---------------------------|---------------|
| Ambient temperature range | -40 to +50 °C |
| Maximum dimming level | 10% |

Product Data

| | |
|-----------------------------------|---------------------------------|
| Full product code | 911401751052 |
| Order product name | BCP383 6LED 27K 220V 40 L30 DMX |
| Order code | 911401751052 |
| SAP numerator – quantity per pack | 1 |
| Numerator – packs per outer box | 12 |
| SAP material | 911401751052 |
| SAP net weight (piece) | 1.399 kg |



Dimensional drawing



BCP280/383/384/385 UNiStrip G3

UniStrip G4

