



# Dynalite Phase-Cut Dimmers

## DLE220

2 channel Leading Edge Dimmer Controller with a maximum load of 20 A per channel.

The Philips Dynalite DLE220 is a two-channel leading-edge dimmer controller, with a maximum load of 20 A per channel. Options available, including an additional RS-485 DyNet/DMX512 port, circuit-breaker trip reporting or neutral disconnect breakers

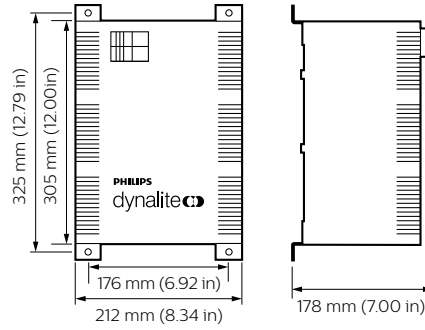
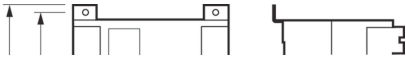
### Product data

General Information	
CE mark	CE mark
Remarks	Please download the Lighting - Product Data Sheet for more information and ordering options
EU RoHS compliant	Yes
Application Conditions	
Ambient temperature range	0 to +40 °C
Product Data	
Full product code	871016350506000

Order product name	DLE220
EAN/UPC – product	8710163505060
Order code	913703002009
Numerator – quantity per pack	1
Numerator – packs per outer box	1
Material no. (12NC)	913703002009
Net weight (piece)	4.650 kg

# Dynalite Phase-Cut Dimmers

## Dimensional drawing



Dynalite Leading Edge Dimmers

Dynalite Leading Edge Dimmers

